



# FFA's New Era

October 2023

Vol. 90 • No. 1

## Stiefvater Shines as a Bright Star



**Hadley Stiefvater, a McCook Central FFA member, from Salem, SD, is an American Star in Agriscience finalist.** The American Star Awards are the FFA's highest achievement awards and represent the best of the best among thousands of American FFA Degree recipients. The Star awards recognize FFA members in 4 categories: Agriscience, Agribusiness, Farmer, and

Agricultural Placement, who have developed outstanding agricultural skills and competencies through the completion of a supervised agricultural experience (SAE) program.

Stiefvater reflects on her start as an 8th grader with a required project. Her project on egg production in laying hens was so strong, she won her Agriscience Fair division at nationals! This sparked an interest in agricultural research, where she found things she was passionate about, and just kept doing more every year. She says, "Agriscience is an opportunity for students to complete real life agriculture-based research projects and understand the scientific process behind the role that research places in modern agriculture."

Through her eight years with her SAE, Stiefvater's additional studies included differences in injectable and oral iron

for baby piglets, salmonella in dairy calves, sow gestation stanchions, and a team project on blockchain technology use in meat traceability. She followed up those research projects by working for Pipestone Systems as a research intern, working for a private livestock clinical research company, and working as a bacteriology assistant at the SDSU Diagnostic Lab. Stiefvater is a Senior at SDSU with Animal Science and Agricultural Leadership majors, and her goal after graduation is to work in the animal health and agritourism fields in rural South Dakota.

Stiefvater shares, "The best way to participate in agriscience is to get involved in the Agriscience Fair program and make connections with people who conduct research in those areas of the agriculture industry." When asked about her path to the American Star program, she says, "It takes many hours and years of work to develop Star in Agriscience projects. Start with agriscience fair projects in 7th or 8th grade, build on your project and find ways to take on additional research with more intensity as you progress. You can then apply for the Star in Agriscience award with your State and American FFA Degrees."

Stiefvater is excited to represent South Dakota FFA as an American Star in Agriscience finalist, showcasing the work she put into her SAE. As a finalist, Stiefvater recorded and submitted a summary of all her SAE experiences and answers to several questions. Her next step is to interview with a panel of judges to determine the winner, which will be announced during the 96th National FFA Convention & Expo, November 1-4th. **Good luck, Hadley!**

## SD Talent Reaches a National Audience

This year, seven South Dakota FFA members were selected to perform in the National FFA Band & Chorus. They will arrive at the convention early to practice and then perform with about 80 other FFA members from across the nation, during convention sessions on stage, as well as in other locations. Congratulations to FFA members:

**National Band - Emersen Lee, Lennox-Sundstrom; Noah Schnee, McCook Central; and Tanner Wallman, Miller**

**National Chorus - Amanda Blare, Winner; Kaizha Blasé, McCook Central; Michael Freeman, Ethan; and Paul Kaffar, McCook Central**

This is Amanda Blare's second and final year performing with the National FFA Chorus. When asked about the experience, Amanda expressed, "I went last year and it was an all-around great experience. I grew a ton." She looks

forward to this opportunity to, "have fun, reconnect with old friends, and make new ones."

Each selected SD member receives a travel scholarship from the SD FFA Foundation to assist with costs. It is an incredible honor and privilege to have auditioned and been chosen for a spot in the national chorus or band. Congratulations to the seven passionate FFA members who will be representing South Dakota at the National FFA Convention.



October 2023: Vol. 90 • No. 1  
Published three times per year by  
the South Dakota FFA Association  
& SD FFA Foundation  
.....

**2023-2024 STATE OFFICERS**

**PRESIDENT**

Alyssa Feather  
alyssa.feather@jacks.sdstate.edu

**VICE PRESIDENT**

Dustin Kolb  
dustin.kolb@jacks.sdstate.edu

**SECRETARY**

Raesa Zelinsky  
raesa.zelinsky@jacks.sdstate.edu

**TREASURER**

Gretta Larson  
gretta.larson@jacks.sdstate.edu

**REPORTER**

Gabrielle Rebelein  
ggrebelein23@ole.augie.edu

**SENTINEL**

Emily Robbins  
emily.robbins@jacks.sdstate.edu

**EXECUTIVE SECRETARY**

Wyatt DeJong  
Cell: 605-842-5683  
wyatt.dejong@sdateded.org

**STATE FFA ADVISOR**

Mercedes Snedeker  
Cell: 605-295-4446  
mercedes.snedeker@state.sd.us

**SD FFA FOUNDATION**

39393 133rd St  
Bath, SD 57427

**EXECUTIVE DIRECTOR**

Gerri Eide  
(605) 765-4865  
gerri@sdfoundation.org

**EXECUTIVE ASSISTANT**

Gretchen Sharp  
gretchen@sdfoundation.org

**DISCLAIMER:**

Sponsorship recognition by the South Dakota FFA Foundation does not constitute an endorsement of the Foundation for the products or services of the sponsoring company, organization or individual.

# Have you ever thought, “I wish I could do more”?

**Leave a Legacy Gift.** After your family is taken care of, ensure that the future is bright for young leaders in agricultural education with a planned gift:

- **Endowments**- Create by contributing a minimum of \$10,000 over 5 years or less, to promote a program long term.
- **Bequests**- Indicate in your will that you'd like to leave part of your estate to the SD FFA Foundation. Gifts can be a particular item, dollar amount or percent of your estate.
- **Beneficiary Designations** - Indicate that the SD FFA Foundation is a beneficiary of your life insurance policy, bank account, IRA or non-qualified annuity.

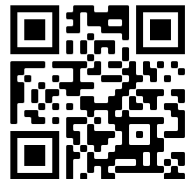
**Make a “tax-smart” gift today:**

- **Assets** - We can accept a variety of assets, including stocks, bonds, mutual funds, real estate, crops and livestock. **Gift a few bushels your next trip through the elevator!**
- **Donor Advised funds** – direct funds to the SD FFA Foundation
- **IRA** - Obligated to take a Required Minimum Distribution? An IRA charitable distribution gift is a simple way to donate while not increasing your taxable income.

To visit about options for Leaving Your Legacy, contact the SD FFA Foundation and consult with your tax advisor. [Gerri@sdfoundation.org](mailto:Gerri@sdfoundation.org) • 605.765.4865

**In addition, we’ve made supporting “the kids in Blue Corduroy” easy!**

- Through **Thrivent programs**, designate grant dollars, fee-free donations, and Thrivent Action Team service project support.
- **Sign up to ROUND UP** debit/credit card purchases or **Give MONTHLY** use the QR code (right) or <https://southdakotaffafoundation.harnessapp.com/wv2/donate>
- Make SD FFA Foundation **Facebook** page donations



## A Mission that Matters!

In FFA, **every member is on a journey that will define their lives.** Each of their experiences looks a little different. **Meet Ella Haven**, a member of the Northwestern Area FFA. Our mission mattered in Ella’s journey:

Ella grew up in the farm life, and always wanted to stay in agriculture. Inspired by her parents, she watched them dedicate their lives to farming. She knows she will do the same, and her role continues to increase on the family farm and their custom harvest operation.

FFA was new at Northwestern Area as she hit middle school, but she joined as soon as possible. **She credits FFA for helping her pursue her goals.** “FFA impacted me significantly. It helped me explore my passions and find my future path. **It showed me dedication and consistency are valuable skills.** I needed to put in effort and be persistent to succeed, and **I will use those skills in my future,**” Ella says. **“I will forever be grateful for the lessons FFA taught me.”** As a senior, **Ella was named the 2023 SD State FFA Star in Ag Placement!**

Currently attending SDSU for Precision Ag, Ella plans to return to the farm and custom operation as a valuable asset.

**Because of YOU,** members like Ella are provided with **life-changing opportunities and inspired to pursue excellence in their journey. Thank you!**



# Eight SD FFA Agri-scientists Advance to National Competition

The National FFA Agriscience Fair is a competition for FFA members interested in the science and technology of agriculture. Students compete in one of six categories with junior high, 9-10th grade, and 11-12th grade divisions. Ten projects in each division are selected to advance and present their project for competition at the national level. South Dakota has seven individual and team projects, consisting of eight FFA members who will be competing at the national level:



OLSON



KLINKHAMMER



L. ROLING



EIDE



CHASE

SIEVERDING



A. ROLING



LAUCK

## Animal Systems

Atlee Olson, Belle Fourche, Division 3

## Environmental Services/Natural Resource Systems

Khloie Klinkhammer, McCook Central, Division 1  
Lauren Roling, McCook Central, Division 3

## Plant Systems

Tanner Eide, Gettysburg, Division 5

## Power, Structural and Technical Systems

Abbie Chase & Ava Sieverding, McCook Central, Division 4

## Social Systems Category

Alyssa Roling, McCook Central FFA, Division 1  
Madison Lauck, McCook Central FFA, Division 3

*Finalists receive a travel stipend to assist with expenses as a special project of the SD FFA Foundation, sponsored by the Franken Family, Fall River Feedyard, Ducks Unlimited, Koupal Lazy EY Angus Ranch, Dry Creek Farm & Ranch, the Pennington County Conservation District, Farm Credit Services of America, SD Research & Promotion Council, Brian and Codi Mills, Carl and Kari Sanders, Butler Machinery, CTE Global, Inc., ADM Harrold, Miller, Tulare, Titan International, SD Biotech Association, Summit Carbon Solutions.*

# SD FFA Members Earn American Degree

Congratulations to the 41 South Dakota FFA members, from 18 chapters, for earning their American FFA Degree. Recipients will be recognized during the 96th National FFA Convention, on Saturday, November 4th, during the 7:30 a.m. (EST) session. All sessions will be broadcast on RFD-TV.

Brandon Valley – Kayla Jacobson

Bridgewater-Emery – Rylee Schultz

Doland – Natasha Allerdings, Dirby Bawek

Groton – Kansas Kroll

Harrisburg – Avery Alvarado, Brenen Blakney, Richard Dirks, Luke Hohwieler, Konnor Lewellen, Kyler Slama, Danesa Willson, Rylee Yoshin

Hitchcock-Tulare – Caden Bottum, Kyle Hamilton

McCook Central – Grace Digiovanni, Kyle Schoon, Megan Stiefvater, Hadley Stiefvater, Madison Stroud

Milbank – Korbin Leddy

Miller – Alana Howard

Mitchell – Emily Maltsberger, Madisyn Sheesley

Northwestern Area – Megan Nash, Sawyer Styles

Rapid City Stevens – Ella Monroe

Rapid City Central – Paige Lehrkamp

Sanborn Central/Woonsocket – Megan Linke

Sturgis – Matea Gordon

Webster – Brianna Duerre

West Central – Kody Geohring, Grace Harden, Josslin Jarding, Emma Kuhlman, Jack Linneman, Keighlor Nolz, Bennet Sebert, McKenna Sichmeller

Willow Lake – Grace Peterson, Trinity Peterson

# State LDEs Are Packing Up and Moving

The South Dakota State Leadership Development Events (LDEs) are moving to Rapid City for the 2023 year. Historically the event has been held in Pierre at the Kings Inn, and more recently, at the Ramkota Convention Center and with the increase in Leadership Development events and the addition of a district we have outgrown the facilities. The 2023 LDEs will be held at The Monument in Rapid City, December 3-4. Members will compete in Parliamentary Procedure, Conduct of Chapter Meetings, Ag Communications, Ag Issues, Marketing Plan, Ag Sales, Public Speaking, Creed Speaking, Extemporaneous Speaking, Employment Skills, and Ag Broadcasting (SD is the only state with Ag Broadcasting). As in the past, there will be a Career Carnival, featuring SD FFA Star Partners, allowing members to interact with industry, in addition to competing in their events.

Interested in helping sponsor this valuable learning event that prepares youth for their future, better equipping them to tackle real-world challenges, and fostering a spirit of leadership and teamwork? Contact the SD FFA Foundation: [gerri@sdfoundation.org](mailto:gerri@sdfoundation.org).

# Members Prepare to Shine at the National FFA Convention



The 2023 National FFA Convention & Expo is just around the corner, November 1-4, 2023, in Indianapolis, IN, and South Dakota FFA members are gearing up to hit the road. There's so much going on!

South Dakota members will be competing, receiving American Degrees, bringing their talents to the band and chorus, attending the Career Expo and leadership workshops, and learning from top Leadership Development Event contestants as they showcase their talents in Finals Halls. They can also participate in on-site service projects available for members, including making sensory bottles to help people of all ages relax during times of anxiety and overstimulation. Members will also attend general sessions in Lucas Oil Stadium, with inspirational speakers, including Juan Bendaña and Corey Flournoy, and the National Officer retiring addresses. Evening fun includes rodeos, and a concert with country singer Lainey Wilson and Dillon Carmichael.

Champion SD FFA members and teams from this past year's State Convention and State Leadership are preparing to represent their chapters and our state. Many have already begun their Career and Leadership Development competitive events with online elements that happened throughout September. The hands-on components will take place in person at convention, along with results being announced. Good luck!

**Flag bearer:** Emily Robbins

**Voting Delegates:** Alyssa Feather, Dustin Kolb, Gabrielle Rebelein, Gretta Larson

**Agriculture Business Management:** Willow Lake; Emma Peterson, Ginny Warkenthien, Alicia Vig, Cole Brenden, Advisor Dan Tonak.

**Agricultural Communication:** West Central; Shayne Luzmoor, Allison Brost, Sydney Neel, Lexi Nichols, Advisor Linda Petersen.

**Agricultural Issues:** Rapid City Stevens; Daphne White, Ethan Hendrix, Elliot Hendrix, Tyler Sears, Alexa Roland, Madison Hoffman, Jessica Joens, Advisor Genetie Hendrix.

**Agricultural Mechanics:** Harrisburg; Kendric Droppers, Owen Murphy, Spencer Enstad, Erika Starr, Advisors Josh Christiansen and Tara Fastert.

**Agricultural Sales:** Tri-Valley; Brady Braaten, Ireland McAreavey, Corral Benson, Zoe Dissing, Advisor Tanner Peterson.

**Agronomy:** Tri-Valley; Tyler Groenewold, Nolan Schmidt, Colby Carruthers, Hunter Plueger, Advisor Tanner Peterson.

**Conduct of Chapter Meetings:** McCook Central; Callie Kaufmann, Addison Ecklein, Madi Schock, Avey Alley, Kaylee Klinkhammer, Aubyrnn Erickson, Karlee Klinkhammer, Advisors Terry Rieckman and Sierra Mesman.

**Creed Speaking:** Hot Springs; Zetta Kuhl, Advisor Tanna White.

**Dairy Evaluation:** Milbank; Brooke Schwagel, Cassidy Schwagel, Kayla Schweer, Bailey Schwagel, Advisor Sara Colome.

**Dairy Cattle Handling:** Beresford; Grace Norling, Advisor Bridget Twedt.

**Employment Skills:** Sturgis; Bennet Gordon, Advisor Stran Holben.

**Extemporaneous Speaking:** Hot Springs; Syndey Lockhart, Advisor Tanna White.

**Floriculture:** Philip; Amya Camp, Leah Staben, Mckenna Mcilravy, Kiara Perkins, Advisor Reed Johnson.

**Food Science and Technology:** McCook Central; Abby Wagner, Aubree Kranz, Vivian Koepsell, Mason Pulse, Advisors Terry Rieckman and Sierra Mesman.

**Horse Evaluation:** Belle Fourche; Nicole Kraft, Anika Main, Elinor Damberg, Lydia Main, Advisor Austin Bishop.

**Livestock Evaluation:** Brookings; Josie Nold, Raesa Zelinsky, Cassie Fenske, Kennedy Nemitz, Advisors Joshua Johnson and Michelle Dykstra.

**Marketing Plan:** West Central; Mya Davidson, Madison DeMent, Addison Bahrenfuss, Advisor Linda Peterson.

**Meats Evaluation and Technology:** Wessington Springs; Ridge Roduner, Braydin Labore, Blaka Larson, Carter Gaikowski, Advisor Brady Duxbury.

**Milk Quality and Products:** Brookings; Landin Tucker, JJ Love, Paige Foster, Samson Storhaug, Advisors Joshua Johnson and Michelle Dykstra.

**Nursery Landscape:** McCook Central; Karlie Stiefvater, Ava Sieverding, Lauren Roling, Abbie Chase, Advisors Terry Rieckman and Sierra Mesman.

**Natural Resources:** Sunshine Bible Academy; Lydia Lo, Rylee Nelson, Charity Freed, Jimmy Burma, Advisor Jason Burma.

**Prepared Public Speaking:** Lennox – Sundstrom; Kathryn Loewe, Advisors Julaine Stratmeyer and Kasey Trocke.

**Parliamentary Procedure:** Scotland; Kateln Rempfer, Jenny Strak, Katelyn Jonas, Patience Starwalt, Bailey Vitek, Tori Dvorak, Emily Dvorak, Advisor Lindsey Kaufmann.

**Poultry Evaluation:** McCook Central; Jon Schock, Lane Deutsch, Brode Dennis, Colton Stiefvater, Advisors Sierra Mesman and Terry Rieckman.

**Veterinary Science:** Parkston; Ashlyn Tapio, Grace Lindeman, Taylor Fink, Kiauna Hargens, Advisors Morgan Ackerman and Nicole Roth.

# Members Imagine, Explore, Discover at Leadership Retreats

In June and July, two SD FFA Leadership Retreats were held at Swan Lake and Storm Mountain camps. Members from around the state attended, some even received "Advisor Tribute" scholarships to attend. Time at camp was spent around a Safari theme, learning, enjoying activities, and making connections. State officers led groups of members where they dove deep into learning about service, integrity, teamwork, communication, perseverance, and a growth-mindset. In addition, there were workshops presented by the Army ROTC and National FFA Officers Gracie Murphy and Karstyn Cantrell, a dance, team building games, and a service project was completed. Wrapping up with banquets, members were recognized for their great work throughout the week with Servant Leader, Most Encouraging, Camp Friend, and Dares Greatly awards.

Leadership Retreats are supported as a special project of the SD FFA Foundation by Twin Cities Region Northland Ford Dealers, CHS Foundation, SD Corn Utilization Council, US Army/ROTC, and the SD Department of Agriculture & Natural Resources. Camper t-shirts were sponsored by: Latham Hi Tech Seed, Tractor Supply Company, SDSU Farmhouse Fraternity, Plains Towing and Recovery LLC, SD Farm Bureau Young Farmers & Ranchers, Hoegemeyer Hybrids, SoDak Labs, Inc., Kibble Equipment and the US Army/ROTC.



THE FACE OF YOUTH.  
THE POWER OF TOMORROW.

Each generation of agricultural leaders must be prepared for lifelong success. That's why the CHS Foundation proudly supports high-impact youth leadership programs like FFA. And why we help accelerate innovation and cultivate career opportunities through university initiatives across the country. We believe in the power of the future, and it all starts with igniting imagination today.

Visit [chsfoundation.org](https://chsfoundation.org) to learn about our ongoing commitment to leadership.



## Blue Jacket Program provides Corduroy Jackets to FFA members

To its owner, the FFA jacket is a physical reminder of the personal accomplishments achieved through the organization - a symbol of commitment and dedication for all who wear the corduroy. This October, the SD FFA Foundation awarded jackets to 450 FFA members from 84 chapters. These members demonstrated leadership qualities and personal growth and some may not have the financial resources to purchase their own jacket. Thank you to our 2023 jacket sponsors, who welcomed new members into the fabric of FFA:

Aaron Johnson	Daniel & Nancy Scholl	Ken's Super Fair Foods	SD FFA District 1 - in
ADM Grain Harrold, Miller, Tulare	David Frasier	Laurie Johnson	memory of Ashley
Agtegra Cooperative	De Johnson	Lee and Diane Rist	Weikamp & Derek Zenk
Alicia Blair	Dell Rapids Coop Grain	Leisinger Farms	SDSU Little International
Alpha Gamma Rho	Donna Acheson	LG Seeds	Seed Exchange LLC
Amanda Roth	Doug and Clara Marsh	Lloyal Saugstad	Sharon Smeenk
US Army/ROTC	Drake's Place	MackSteel	Sioux Valley Energy
BankWest	East River Electric	Malachi Strategies	Spencer Chase
BASF	Cooperative	Mark & Heather Fillaus	Stella Nagel, in Memory of
Butler Machinery Company	Ed & Julie Mueller	Marvin Wastell	Eugene Nagel
C & B Equipment	Eileen Peterson	Midwest Ag Supply, LLC	Steve Backes
Charlie Hoffman	Farm Credit Services of	Mike Jaspers	Steve Deuschle
Chris and Penny Nelson	America	Nathan and Tiffany	Steven and Laurie Zemlicka
Christensen Farms &	Farmers Mutual of Nebraska	Sanderson	Summit Carbon Solutions
Feedlots	First Dakota National Bank	Olsen Custom Farms	Sydney Peters
CHS Foundation	Gary & Bev Monson	Paul Fixen	The First National Bank in
Chuck and Koreen	Gary and Bev Monson	Phil Zimmerman	Sioux Falls
Anderson	GDM Solutions, Inc.	Pioneer/Corteve	Tim & Andrea Scotting
Citibank (South Dakota)	George Allen	Potter County Farm Bureau	Tim & Val Wengler
N.A. &	Golden West	Ray Krause	Tim Brown
Citibank-McKnight	Telecommunications	Reid Christopherson	Titan Machinery
Clint and Kiersten Sombke	Hanson & Associates LLC	RDO Equipment Company	Twin Cities Region
Craig & Kari Winquist	Harold Armstrong	Riverview LLP	Northland Ford Dealers
Craig Ostebee	Jason Gant	Ron Hillestad	Watertown Animal Clinic
Cronin Farms	Jay & Kerri Koepke	Ronald A. Johnson	Watertown Fraternal Order
CROPLAN by WinField	Jerry Nolz	Roy and Sara Gjerde	of Police Lodge #6
United	Jim Chilson	Ryan & Kristi Cammack	Wayne and Vicki Soren
Dacotah Bank	Justin & Stacey Penrod	Sadie Vander Wal	West River Electric
Dakota Grain Connection	Karl Bright	Sarah and Keith Lambert	Association
	Kay and Rick Miller	SD Corn Utilization Council	

## SD Ag Educator Serves National FFA Committee Four Decades



After 42 years of service, Dr. Lon Moeller, Professor Emeritus, South Dakota State University (SDSU), Brookings, will end his commitment to the National FFA Farm and Agribusiness Management Career Development Event (CDE) Committee with the 2023 National FFA Convention in November. Each year approximately 180 FFA members, representing the first-place teams from 40-45 states compete in the event that consists of a three-hour exam.

The opportunity to work with other professionals dedicated to Agricultural Education has greatly enriched his life. "Comradery and working with other professionals dedicated to excellence" are two benefits he identifies as most significant personally. Moeller believes that for FFA members, "being able to manage one's financial situation is a vital lifetime skill in any profession. This CDE allows students to be able to evaluate the multiple economic aspects that contribute to success."

Moeller began assuming multiple long-term roles at the national convention in 1981, as an SDSU Agricultural Education professor, bringing ag-ed majors to the convention as volunteers. In 2008, he became a committee member, accepting multiple leadership roles, including serving six years as the National CDE Superintendent.

Former Jackrabbit and Agricultural Education alumni Brett Monson, recently joined the National FFA Farm and Agribusiness Management CDE Committee. He says, "Having been one of Moeller's students at SDSU, I can attest to the profound impact he has had on countless lives including my own. His unwavering commitment to Ag Education and expertise in ag-business management have not only shaped former students like myself, but been instrumental in the committee's success. Through his leadership, he instilled the values of hard work, collaboration, and problem solving, preparing FFA members to become agents of positive change in the agricultural industry and local communities"

## Members Gain National Leadership Experience

South Dakota FFA members expanded their leadership skills in our nation's capital this past summer, by attending the Washington Leadership Conference. WLC provides thousands of FFA members from across the nation networking opportunities, connecting members, elected officials, and National FFA leaders. Members grow their personal leadership skills, set goals, and come back to make an impact in their home chapters. Two SD FFA members reflect on their experience.



**Colton Stiefvater, McCook Central FFA** said, "It gave me a personal mission statement to live by. Having a mission statement is a super impactful thing that helps give me purpose and drive in my activities like FFA and sports, as well as my life and responsibilities I have been given the opportunity to perform."

**Quinton Berg, Bridgewater-Emery FFA** shared, "I made so many new friends from across the nation and made memories that will last a life-time."

*Pictured: Colton Stiefvater with Representative Dusty Johnson*

## State Officers Connecting through the Corn

The current state officer team saw a need to increase the communication with chapter officers across the state, so we created a Secretary Hotline. This hotline consists of chapter secretaries and State Secretary, Raesa Zelinsky. The Secretary Hotline is an effective way to improve communication and collaboration between the state officer team and chapter secretaries. It provides a direct channel for sharing important information and updates with the

chapters. Our goal is to help keep everyone informed about deadlines within the state association and inform state officers about chapter activities.

Finally, if you are the chapter secretary and are not connected with the secretary hotline, talk with your advisor. He/she received an email from Mr. DeJong that will direct you with your next steps.

## Nominate Top Ag Teachers for Golden Owl Award

Agricultural educators serve a critical role in their communities, devoting countless hours to preparing students for successful careers and helping them pursue their passions. To honor their contributions and support them with additional resources, Nationwide and the SD FFA are accepting nominations for the 2023-2024 Golden Owl Award, October 1- December 31st, at <https://www.sdaged.org/GOA> or scan the QR code (left).



A selection committee will determine finalists from each FFA District, to receive an individualized plaque and \$500 to support their agriculture

programs. One grand prize winner will then be selected as Ag Educator of the Year, the coveted Golden Owl Award trophy, and an additional \$3,000 Nationwide-funded check at the State FFA Convention in April.

"We are proud to thank agricultural teachers for the extraordinary care they bring to their work as they go above and beyond in educating America's youth and future leaders," said Brad Liggett, Nationwide's president of Agribusiness. "We're thankful for the support of our state partners in these efforts to bring much-needed recognition to our teachers across the country."

**BASF**  
We create chemistry

**Leisinger Farms**

# FFA Members Showcase Projects at the State Fair

366 FFA members from 71 FFA chapters competed in livestock exhibitions, farm safety quiz bowl, agriscience fair, and a variety of agricultural displays at the SD State Fair. Top awards are as follows:

## Chapter Sweepstakes

- 1st – McCook Central
- 2nd – Beresford

## Chapter Display

- 1st – Bridgewater-Emery
- 2nd – Arlington
- Sponsored by Valley Queen Cheese

## Agriscience Exhibit Results

- 1st Division 1 – Doland FFA
- 1st Division 2 – Bobbi Eide, Gettysburg
- 1st Division 3 – McCook Central FFA
- 1st Division 4 – McCook Central FFA
- Sponsored by Kevin & Amber Blagg.

## Agricultural Exhibit

- 1st Equipment Restoration – Landon Roling, McCook Central
- 1st Large Metal Project – Colton Michalek, Wessington Springs
- 1st Medium Metal Project – Taylor Howley, Bridgewater-Emery
- 1st Small Metal Project – Arlington FFA
- 1st Medium Wood Project – Gavin Mattson, Deuel
- 1st Small Wood Project – Doland FFA
- 1st Home Accessory Project – Bradley Dangel, Andes Central
- 1st Pallet Board Construction – McCook Central
- 1st Horseshoe Project – Bradley Dangel, Andes Central
- 1st Metal Art & Plasma Cut Design – Gavin Mattson, Deuel
- 1st Cut Floral Arrangements – Beresford FFA
- 1st Hanging Baskets/Decorative Planters – Arlington FFA
- Sponsored by Valley Queen Cheese, Milbank.

## Beef Cattle Show



**Grand Champion Market Heifer** – Cody Eich, Howard

**Reserve Champion Market Heifer** – Seth Sundal, Tri-Valley

**Grand Champion Breeding Heifer** – Kenidey Effling, Highmore

**Reserve Champion Breeding Heifer** – Brooklyn Ludens, Viborg-Hurley



**Grand Champion Market Steer** – Ty Bergh, Florence

**Reserve Champion Market Steer** – Cailey Sime, Milbank

**Breeding Heifer Showman** – (1) Cash Lehrman, Bridgewater-Emery, (2) Creighten Werning, Bridgewater-Emery, (3) Payton Beare, Highmore, (4) Chance Blum, Chamberlain, and (5) Paton Coyle, Miller



**Market Beef Showman** – (1) Sawyer James, Estelline, (2) Jayna Blume, Pierre, (3) Nate Struck, West Central, (4) Seth Smith, Doland, and (5) Hannah Heezen, Wessington Springs

**Breeding and Market Beef Showmanship** sponsored by Kevin & Amber Blagg & C & R Supply, Inc.

## Sheep Show



**Grand Champion Ram** – Carissa Scheel, Wessington Springs

**Reserve Champion Ram** – Kasandra Knutson, Viborg-Hurley



**Grand Champion Breeding Ewe** – Tayden Miller, Estelline

**Reserve Champion Breeding Ewe** – Raesa Zelinsky, Brookings





**Breeding Sheep Showmen** – (1) Josie Nold, Brookings, (2) Olivia Newell, Lennox Sundstrum, (3) Carissa Scheel, Wessington Springs, (4) Hadley Stiefvater, McCook Central, and (5) Colton Michalek, Wessington Springs



**Breeding Meat Goat Showmen** – (1) Kacy Goehring, Parkston, (2) Vanessa Dunkelberger, Parker, (3) Peyton Bischoff, Huron, (4) Emma Pierce, Estelline, and (5) Elle Goehring, Parkston

### Rabbit Show



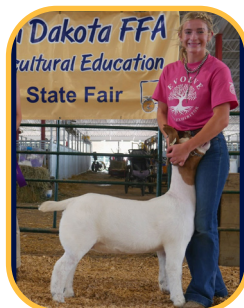
**Champion Best in Show** – Hunter Masterson, Menno

**Reserve Best in Show** – Hunter Masterson, Menno



**Grand Champion Market Lamb** – Tyson Miller, Estelline

**Reserve Champion Market Lamb** – Riley Pankratz, Parker



**Grand Champion Wether Dam Doe** – Ashlyn Tangen, Sioux Valley

**Reserve Champion Wether Dam Doe** – Jana Stearns, Hot Springs



**Showmen** – (1) Julia Tinker, Brandon Valley, (2) Brianna Gilchrist, Winner, (3) Michael Freeman, Ethan, (4) Hunter Masterson, Menno, and (5) Hannah Schoenfelder, Huron

**Rabbit Showmanship** sponsored by Woehl's Rabbits. Best of Show and Reserve sponsored by Mark and Staci Schloe.

### Dairy Goat Show



**Market Sheep Showmen** – (1) Drew Pederson, Garretson, (2) Landon Berg, Bridgewater-Emery, (3) Taya Chelmo, Kimball, (4) Andrea Miller, Canton, and (5) Chanel Mohrhauser, Tri-Valley

**Breeding and Market Sheep Showmanship** sponsored by Knutson Suf-folks & C & R Supply, Inc.



**Grand Champion Market Goat** – Tanner Van Asselt, Tri-Valley

**Reserve Champion Market Goat** – Derek Van Asselt, Tri-Valley



**Grand Champion Doe** – Trevon Cross, Garretson

**Reserve Champion Doe** – Maddisyn Thompson, Elkton

### Meat Goat Show



**Grand Champion Breeding Doe** – Peyton Bischoff, Huron

**Reserve Champion Breeding Doe** – Cooper Bischoff, Huron



**Market Meat Goat Showmen** – (1) Matea Gordon, Sturgis, (2) Carley Crist, Beresford, (3) Danika Gordon, Sturgis, (4) Delaney Zoss, Mitchell, and (5) Tye McGraw, Clark

**Breeding and Market Meat Goat Showmanship** sponsored by Lazy J Bar Ranch and C & R Supply, Inc.



**Grand Champion Milking Doe & Supreme** – Trevon Cross, Garretson

**Reserve Champion Milking Doe & Reserve Supreme** – Trevon Cross, Garretson

# FFA Members Showcase Projects at the State Fair CONT.



**Showmen** – (1) Trevon Cross, Garretson, (2) Makayla Cross, Dell Rapids, (3) Tayber Hansen, Doland, (4) Madisyn Thompson, Elkton, and (5) Lane Thompson, Elkton

**Dairy Goat Awards** sponsored by Boldt Farms

## Swine Show



**Grand Champion Breeding Gilt** – Jonathan Moe, Estelline

**Reserve Champion Breeding Gilt** – Nolan Eichler, Lake Preston



**Top 5 Breeding Showmen** – (1) Nolan Eichler, Lake Preston, (2) Sutton Murphy, Arlington, (3) Jovie Wirt, Lennox Sundstrum, (4) Dawson Plagmann, Bridgewater-Emery, and (5) Jocelyn Wagner, Hichcock-Tulare



**Grand Champion Market Hog** – Jonathan Moe, Estelline

**Reserve Champion Market Hog** – Treyson Zeigler, Gettysburg



**Market Showmen** – (1) Melanie Calmus, Howard, (2) Khloie Klinkhammer, McCook Central, (3) Clayton Weber, ORR, (4) Lacie Weber, ORR, and (5) Hadlie Johnson, Montrose

**Swine Showmanship** awards sponsored by Thompson Family and C & R Supply, Inc.

## Dairy Cattle Show



**Supreme Champion** – Braylon Plucker, Lennox Sundstrum

**Champion Holstein** – Grace Norling, Beresford

**Champion AOB** – Braylon Plucker, Lennox Sundstrum



**Showmen** – (1) Steven Paulson, Grotton, (2) Grace Norling, Beresford, (3) Sutton Plucker, Lennox Sundstrum, (4) Estelle Schweer, Milbank, and (5) Katie Scherff, Dell Rapids

**Dairy Showmanship** sponsored by Valley Queen Cheese

## Adopt-an-Animal

**Sow with piglets** – Bode Sweeter, Lennox Sundstrom & Max Klein, Wessington Springs

**Laying hens** – Colton Stiefvater, McCook Central

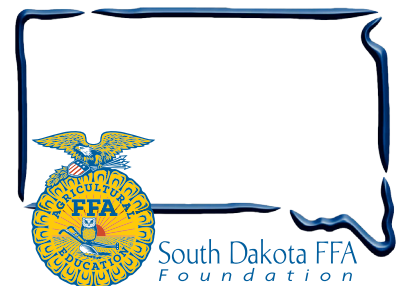
**Laying hens & chicks** – Mercedes Jones, Wessington Springs & Madison Hofer, Freeman

**Chicks** – Kayeleigh Bowden, Huron

**Bucket calf** – Grace Rowen, Wolsey-Wessington

**Feeder pigs** – Aedan Klawonn, Madison Central

Funding for these events are made possible as a special project of the SD FFA Foundation. FFA Livestock Show premiums are sponsored Hart Angus, Livestock Specialists Inc., Horizon View Farms, The Kippley Group, and SD Cattlemen's Foundation. Exhibitors show t-shirts are sponsored by: 605 Sires; Cargill; C & R Supply, Inc; Cob Creek Cattle; Custom Genetic Solutions; Dakotaland Feeds; DeJong Ranch; Gullickson Family Livestock; Lazy J Bar Ranch; Midwest Veterinary Service; SD Lodge for Fraternal Order of Police; Stangl Shorthorns; The Kippley Group; Horizon View Farm; Cattle Business Weekly; Whetstone Commodities; Wagner Herefords; Salem Veterinary Service; Hart Angus; and Livestock Specialists.



# The Ag-Ed Family Continues to Grow

FFA Advisors are the core foundation of every agricultural education program. This year, South Dakota welcomes 18 new agricultural educators/FFA advisors. We asked FFA members from other Ag Ed programs how their ag teachers have impacted them. This provides a hint of the potential impact new advisors, just getting started in the classroom, can have on their students:

Cassie Fenske, Brookings states, "Whether it's helping me practice opening ceremonies to celebrating our wins, Mr. Johnson is cheering me on! I admire his desire to work hard, even when no one is looking. I can't thank him enough for everything he's done for me!"

Norah Zubke, Webster says; "Mr. Zenk has made a tremendous impact on my agricultural career and continues to, for myself and others. He spends hours upon hours working with students, enticing agricultural practices, and inspiring everyone to apply themselves to agriculture and FFA."

Bailey Moke, Belle Fourche shares, "Mr. Bishop has shown me how to keep going even when everything hits the fan and how to be productive and manage my time wisely. He helped me get out of my comfort zone and become a better leader!"

Agricultural Educators leave a lasting, positive impact on their students, as shown by these members' first-hand accounts. We are excited to welcome these new educators to the SD FFA family and see just how big their impact can become:

## New Ag-Ed Teachers/ FFA Advisors

Tyler Anson: Bennett County

Justin Lovrien: Brandon Valley

Carl Petersen: Cheyenne- Eagle Butte

Nick Dalton: Clark

Abbie Philmalee: Colome

Brian Albers: Custer

Jennah Trefz: Edmunds Central

Adam Koll: Florence

Anna Dage: Groton

Todd Waring: Highmore

Cassie Zuber: Hoven

Kade Bonenberger: Kadoka

Kaycee Jones: Kadoka

Alison Knutson: Marion

Sierra Mesman: McCook Central

Kimmie Martin: Sioux Falls CTE Academy

Katelyn Todd: Sully Buttes

Aaron Locke: Wilmot



**MACKSTEEL**  
FARM AND RANCH EQUIPMENT  
WWW.MACKSTEEL.COM | 866-882-2188



**WE HAVE THE KNOW TO HELP YOU GROW.**

Farm Credit Services of America

**We work for the next generation in agriculture.**

More than a source of financing, we are a source of expertise and guidance. Learn more about our scholarships and programs at [fcsamerica.com/scholarships](https://fcsamerica.com/scholarships).

**We Are Proud to Support SD FFA.**

**Agriculture Works Here..**

[youngandbeginning.com](https://youngandbeginning.com)

# State Officers Take On South Dakota Agriculture

In late July, the State FFA Officers were classic South Dakota tourists, visiting over 50 agricultural businesses and industries in three days, across western South Dakota. In teams of two, they learned about the wide array of SD ag businesses and facilities. Accompanied by local FFA members on many of the visits, the mission of their visits was to 1. learn more about SD ag businesses, 2. learn about the future needs of the agricultural industry so they can share this information with members across the state, and 3. share what SD FFA and Agriculture Education programs are doing to help meet the needs of South Dakota's future.

Locations visited included: SD Retailers Association, SD Department of Agriculture & Natural Resources, Farm Credit Services of America, First Dakota National Bank, Reinke Gray Wealth Management, the SD Beef Industry Council, Littau Angus Ranch, Site Work Specialists, RDO Equipment, News Center 1, Jenner Equipment, Black Hills Federal Credit Union, Butler Machinery, Dakota Mill & Grain, Baker Timber Products, DeTye Vet Supply, High Plains Genetics, Northern Hills Veterinary Clinic, St. Onge Livestock, Plains Towing & Recovery, Bear Butte Gardens, Kammerer Family Livestock, Scotchman Industries, Cattle Business Weekly, Kennedy Implement, Ravellette Publications, Philip Livestock, West River Electric, Wall Meats, Bell Bar Ranch, Hewitt Land & Livestock, SD Stockgrowers Association, First Interstate Bank, Black Hills Stock Show, TranSource Truck & Equipment, Wild Idea Buffalo, Little Lucky Cattle Company, Winner Circle Feedlot, Covery Custom Application, Wendy Mortenson Agency, Grossenburg Implement, South Central Livestock Supply, Myers Grain & Livestock, Dakota Honey, M & M Cattle Services, Fall River Feedyard, Fall River Veterinary Clinic, Busy Ewe Farm Fibers, J Ellen Design & Market, Dakota Greens, Dawn Wind Dairy Goats, and Loerh Horse Care.

What did they learn? So much! They discussed the importance of having quality equipment that helps meet the increasing demands of local and national customers. They talked with ag leaders about the necessity of raising future ag leaders that will continue to exhibit hard work, resilience, and passion to further the agricultural industry. They discussed the direct-to-consumer business model and providing power to the producer.

These visits truly allowed the state officer team to grasp and acknowledge the diversity of South Dakota's #1 industry, agriculture!



## Making Meaningful Connections at Dakotafest

During mid-August, the State Officers attended Dakotafest in Mitchell, SD. Graham Tire Company and Titan Tire Corporation kindly provided the officers with space and a tent to promote the South Dakota FFA Association and South Dakota FFA Foundation online auction.

The officers networked with industry professionals, policy leaders, and SD FFA members. They dove into conversations about issues South Dakota agriculture is facing and learned about business at the forefront of the agriculture industry.

*Picture: Welsey-Wessington FFA stopped by to see the State Officers while they networked with industry professionals.*



## SD FFA Foundation Awards \$3,000 in Local FFA Chapter Service Project Grants

The FFA motto all FFA members learn includes the words, "Living to Serve", making service a core value taught to SD's over 10,000 high school Agriculture Education students through FFA. The SD FFA Foundation recognizes the value of local chapter service-learning projects and wants to enable chapters to grow student and community development. As a result, we provide grants up to \$500/chapter for service projects in local communities. Grants are funded as a special project of the SD FFA Foundation.

Congratulations to the following chapters receiving SD FFA Foundation funds this fall for their service projects:

**Bowdle** - develop and implement an Agriculture After-school Club

**Brookings** – develop and conduct after school lessons with G.A.P. Camelot Intermediate School

**Bridgewater-Emery** - install and establish four raised beds to be used for a community garden

**Cheyene Eagle Butte** – winterize greenhouse to grow greens for the School Salad Bar, and compost the cafeteria food waste to produce fertilizer

**Doland** - plant a pollinator garden on Main Street

**Ethan** - develop a sensory garden for LifeQuest that serves individuals with both physical and mental disabilities

**Hitchcock- Tulare** – build storage and install flooring in community daycare



# Get to Know the State Officers



**Alyssa Feather, President**

**Home Chapter:** Wilmot

**Major:** Political Science and Agricultural Leadership, SDSU

**SAE:** Food Service

**Favorite Color:** Green

**Favorite Food:** Pasta

**Favorite FFA Memory:** Traveling to national convention with numerous chapters during my freshman year. Many connections and great memories were made!



**Dustin Kolb, Vice President**

**Home Chapter:** Belle Fourche

**Major:** Agricultural Science, SDSU

**SAE:** Beef Cattle Production

**Favorite Color:** Maroon

**Favorite Food:** T-Bone Steak

**Favorite FFA Memory:** Spending time with my Parli-Pro team at our AirBnB in Indianapolis.



**Raesa Zelinsky, Secretary**

**Home Chapter:** Brookings

**Major:** Animal Science, SDSU

**SAE:** Sheep Production

**Favorite Color:** Purple

**Favorite Food:** My mom's homemade mac and cheese

**Favorite FFA Memory:** Being on the Brookings livestock judging team that competed at State CDE's in 2023, and hearing our name called as state champions.



**Gretta Larson, Treasurer**

**Home Chapter:** Lake Preston

**Major:** Animal Science and Biotechnology, SDSU

**SAE:** Dairy production and Swine production

**Favorite Color:** Green and yellow

**Favorite Food:** Honey, Peanut Butter, and Banana Toast

**Favorite FFA Memory:** Participating in Creed Speaking at State LDE's in 2019.



**Gabrielle Rebeleine, Reporter**

**Home Chapter:** Sioux Valley

**Major:** Psychology, Augustana

**SAE:** Equine Production and Performance

**Favorite Color:** Purple

**Favorite Food:** Country Fried Steak and Sweet Potato Fries

**Favorite FFA Memory:** Going to district officer training and the legislative breakfast.



**Emily Robbins, Sentinel**

**Hometown:** Elkton, SD

**Major:** Agricultural Business and Agricultural Leadership

**SAE:** Sheep Production

**Favorite Color:** Pink

**Favorite Food:** Strawberries

**Favorite FFA Memory:** Attending Washington Leadership Conference where I had the opportunity to grow my personal leadership skills while connecting with members from across the country and learning about our nation's capital.

# Ag Adventure Center Cultivates Learning at State Fair

The mission of the Ag Adventure Center is to showcase modern agricultural practices, communicate commitment to natural resources, and demonstrate wholesome and safe food production. Livestock is a big draw in welcoming the public into the Ag Adventure Center, yet once visitors enter into the space, they are met with experiences and meaningful learning opportunities that touch on the vast elements of the South Dakota agriculture industry. There was a great deal of joy throughout the building when the two sows brought in by Pipestone Systems began farrowing.

Anyone who walked past the Ag Adventure Center would have noticed landscaping additions, with native and pollinator plants. Without the generous help from East River Nursery, John and Shelly Wilson, Nate Stuck, Delila, Paton & Jessie Coyle, Amy and Maya Howard, Bode Sweeter, Isabella Malley, Lowell Perman, and Judy Morford, this eye-catching addition would not have been possible. People who stopped by were able to see and interact with a beef cow, dairy cow, dairy calf, dairy goats, chickens and chicks, mother sows and piglets, meat goats, mother ewes and lambs, rabbits, and a bee hive. Favorites through the barns were bottle calves, especially during feeding time, the chicks in the carnival exhibit, and the soft lambs.

Educational interactive agriculture displays were scattered throughout, providing insights on cuts of beef and pork, ag commodities found in South Dakota, ag fact jeopardy, the Agtegra "Farm to Home" shopping area, and soil conversation activities. There were also virtual tours of pig, chicken, and dairy barns as well as FFA members' Agriscience fair displays, tractor restoration projects, woodworking and metal projects, and even floral arrangements.

Having district and state FFA officers, along with chapter member volunteers, at the Ag Adventure Center is a great way to connect with visitors and educate them about agriculture and FFA. This allows for meaningful conversations and interactions, providing visitors with a more immersive experience. Activities were hosted by guests covering topics that included a live cow ultrasound by Dr. Eric Knock, butter making with state officers, Soil Health Center by NRCS, making dry rub by SD Beef, dairy processing by SDSU Dairy, and soy playdough by SD Soybean.



## Chapter Chatter

**Brookings FFA** hosted its Chapter Kickoff Night. With 40+ members in attendance, they held a bean bag tournament and various games, such as spike ball, for members to participate in. This fall, the chapter held proficiency workdays, and organized a community food drive.

**Deubrook FFA** have been quick on their feet. They organized a jitterbug clinic for chapter and school members and hosted a kickball kickoff event.

**Groton FFA** collected auction items from local businesses for their FFA Chapter auction at the Brown County Fair. Half of the proceeds raised went to Farm Rescue, while the other half is designated for chapter expenses.

**McCook Central FFA** held its first Junior High Appreciation Day. The chapter hosted a fun activity to show their gratitude to junior high FFA members each month. Last month, they served ice cream. The chapter also organized SOFY events every Thursday for surrounding third graders to learn about farm safety.

**Milbank FFA** selected its Junior Officer Team for the upcoming year.

**Rapid City Stevens FFA** completed building a cable fence at Raider Park, near their school.

**Webster FFA** attended the Agtegra Appreciation Day concert, worked at the Cattlemen's beef booth at the state fair, and held land and range judging practices and competitions.

**Wilmot FFA** held its first-ever chapter kickoff night. Members raced go-karts, played games, and started planning the year's activities while sitting around a bonfire.

# Scheel uses Ag Adventure Center Sow for an Act of Service



Carissa Scheel, the Wessington Springs FFA Chapter President, exemplified the line in the FFA motto, "Living to Serve", and funded eleven seats on the Midwest Honor Flight just this year, by taking advantage of an FFA opportunity. Midwest Honor Flight is a non-profit organization in Northwest Iowa, South Dakota, Northeast Nebraska, and Southwest Minnesota dedicated to providing Veterans with respect, honor, and closure with an all-expense-paid trip to our nation's capital. Carissa got the idea from her 5th-grade teacher, Connie McLaughlin, and after seeing a similar story on the news, she knew she wanted to donate to the Midwest Honor Flight.

Carrisa's fundraising began after getting encouragement from her mom to apply for and being awarded one of the Pipestone Systems sows and piglets at the FFA Ag Adventure Center, at the 2022 State Fair. Carissa raised \$9,600 by selling her sow and piglets and hosting a local fundraiser in her hometown. After completing her project, Carissa said, "Honestly, it was overwhelming. I initially thought I would raise 2-3 thousand dollars..." It is amazing to see how Carissa was able to use her FFA journey to impact so many.

Carissa's future plans are to go to vet school and come back to South Dakota to practice veterinary medicine, once she graduates this spring.

## 5th Annual Auction Supports Core Mission of FFA

BigIron Auctions hosted an online auction September 20th, raising \$9,517 for the South Dakota FFA Foundation. All proceeds will fund events and activities relevant to our core mission.

Without the following businesses who donated 52 lot items to the auction, our event would not have been possible: C & B Equipment, Butler Machinery Company, Vern Eide of Mitchell, Millborn Seeds, Amanda Radke, Rebekah Scott Designs, Allevity Entertainment, Southern Meadows Photography, Dimock Dairy, Farm Life Creamery, Runnings- Aberdeen, Tractor Supply Company- Aberdeen, Lake

Area Technical College, Nicole's Needlework, Adee Honey, Brevant, BASF, Croplan by Winfield United, Asgrow/Dekalb, Dakota Pure Bison, Mustang Seeds, NK Seeds, Leisinger Farms, SD School of Mines, SDSU CAFES, Mitchell Technical College, Graham Tire, Titan International, Quilt Bank, Woolly West Originals, K Bar J Leather, Black Hills Stock Show, Black Hills Roundup, Busy Ewe Farm Fiber, SD Stockgrowers Association, Western SD Independent Vitalix Dealers, Lauing Mill Iron L Ranch, FMC, Anthem Oats, and Tapadero Annie's. Thank you to all who donated, bid, or bought from the South Dakota FFA Foundation Online Auction.



## The SD FFA Association has a car!

Marvin & Corinne Wastell donated a car for the Leadership and Program Manager to utilize while serving the 110 SD FFA chapters. We are blessed that donors step up to meet our needs, making it easier to develop leadership, personal growth and career readiness in our members!

**MAKE AN IMPACT.**

Opportunities for students and recent graduates interested in a career in the equipment industry.

**APPLY TODAY**  
[RDOequipment.com/AYF](https://RDOequipment.com/AYF)

**RDO**  
EQUIPMENT CO.

**M**

**MIDWEST**  
VETERINARY SERVICE



## National Land & Range Events

As the summer comes to an end, members from across the state competed in the land and range evaluation competitions. The NRCS organized four regional contests with the winners moving on to the national contest in Oklahoma City, OK next May. The land & homesite judging contest focused on soil properties, runoff, land capability, and limiting factors concerning soil health, while the range judging contest allowed members to identify plants, provide adequate livestock carrying capacity, and assess habitat suitability for the given ecological site.

Congratulations to the 5 Land teams: **Kadoka, Wessington Springs, Willow Lake, McCook Central, and Tri-Valley**

and 3 Range teams: **Wolsey-Wessington, Kadoka and Webster/Waubay**, that won their Regional FFA events. They will advance to national competition next May in Oklahoma City. Thanks to LeRoy and Cathie Draine, Rapid City, SD, for sponsoring \$100 scholarships for the 1st place range judging individuals (**Dakota Boersma, Wolsey-Wessington, Shaylee Porch, Kadoka, and Brayden Aadland, Webster/Waubay**) and the SD Soil Health Coalition for sponsoring \$100 scholarships for the 1st place land judging individuals (**Allie Madsen, Kadoka, Remie Roduner, Wessington Springs, Shelby Anderson, Willow Lake, and Zoe Dissing, Tri-Valley**) We are seeking sponsors of travel scholarships for the winning teams.

## Welcome to New State Leadership



Welcome to New State Leadership Caroline Hansen will be joining the South Dakota FFA staff as the Leadership and Program Manager, beginning November 6, 2023. Miss Hansen has a robust portfolio within youth development and agricultural education. She graduated from Kansas State University with a degree

in Animal Science & Industry, and has served as a South Dakota 4-H Youth Program Advisor in Davison and Hanson Counties, where she helped develop and implement several new state-wide programs and conferences.



Mercedes Snedeker also started her role as the SD Department of Education Northwest Region Career Development Specialist and State FFA Advisor in June of 2023. Before starting in the position, she was the ag teacher and FFA advisor at Gettysburg School District for 5 years. Mercedes and her Husband Myles live in Hoven, SD with

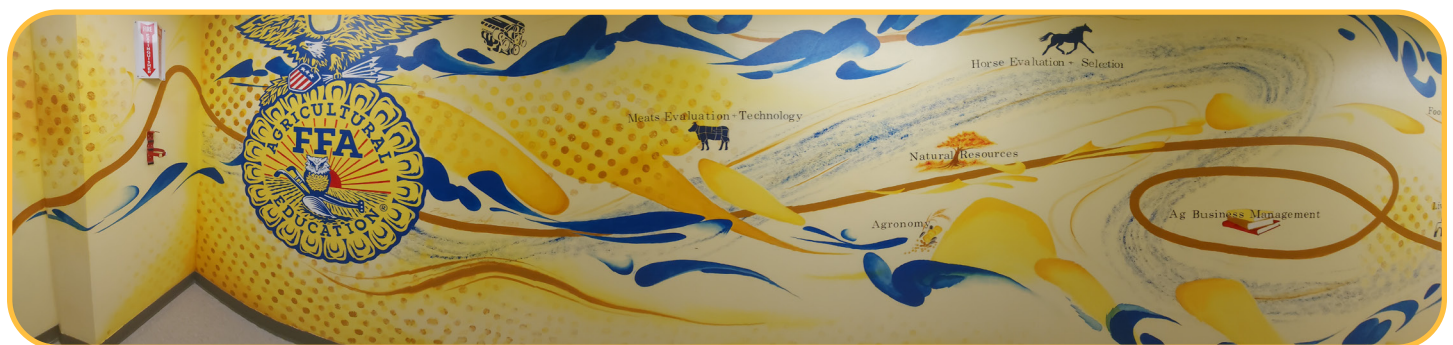
their two dogs and a cat.

Welcome aboard, and we can't wait to see the exciting opportunities you create for our members!

## Mural Provides Agriculture Education Tribute

The Wessington Springs FFA Chapter had FFA Alumni Kenzee Schafer paint these two thirty-foot mural walls in the hallways between the main school building and the Ag facilities. This mural represents all of the opportunities

that FFA has to offer while also paying tribute to our strong and proud history in Agricultural Education. These walls represent the program today and the future of Agriculture and will stand strong for many more decades to come.





# South Dakota FFA Foundation, Inc. Annual Report July 1, 2022 – June 30, 2023

## President's Message

### It Takes a Vision



It takes a vision and a committed group of individuals to make an impact. In 1973 there was a group with a vision to create something that would make a positive impact on agricultural education and the youth of our state and through their vision they created the South Dakota FFA Foundation. For fifty years the directors and staff of this foundation have continued to honor their vision by connecting with you, our donors, because it's with your

continued support that together we can make a major impact in the lives of our FFA members.

The FFA organization is a growing entity, seeing record numbers in membership on the national level and at home in South Dakota; we now have 110 FFA chapters and a record 6,568 South Dakota FFA members. What a great opportunity we've been given to mentor, impact and even learn from the next generation. We get to see what they will become, what they will create and what new and wonderful technology they might invent for the agricultural industry as well as others. This is why your donation means so much to us. Your generosity and willingness to contribute financially year after year lets us continue the vision started by those who came before us and those who will follow. In 2022-2023, we received \$619,063.81 in monetary and in-kind contributions from 632 donors. To every single donor I send a strong hand shake and a huge thank you for your part in another great year for our foundation.

Next time you come in contact with a SD FFA member, I encourage you to take a moment to ask them about their experience as an FFA member, ask how their SAE is going and what the future holds for them. This is truly the best way to learn how you as a donor are impacting these young lives. I know it will be a great conversation.

As we step into another year together let us focus our vision on the youth of South Dakota, the greatest industry of agriculture, and what role each of us will pursue as we envision the future of the SD FFA Foundation for another fifty years.

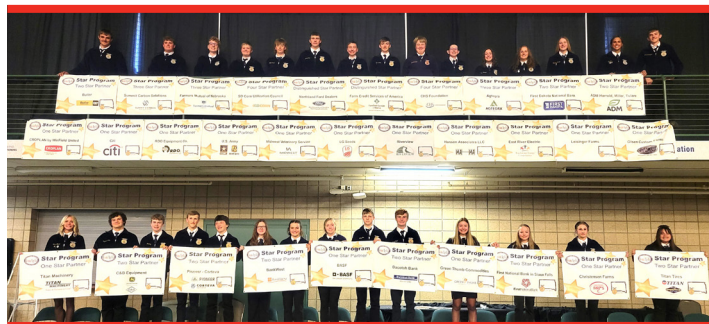
Sincerely,

*Sandy Osterday*

Sandy Osterday

South Dakota FFA Foundation Board President

## 2022-23 Star Partners



**Distinguished Star Partners – Twin City Region Northland Ford Dealers & Farm Credit Services of America**

**4 Star Partners – CHS Foundation & SD Corn Utilization Council**

**3 Star Partners - Agtegra, Farmers Mutual of Nebraska, Summit Carbon Solutions**

**2 Star Partners – ADM- Harrold, Miller, Tulare; BankWest; Butler Machinery; C & B Equipment; Dacotah Bank; First Dakota National Bank, The First National Bank in Sioux Falls; and Pioneer-Corteva**

**1Star Partners – BASF; Christensen Farms; Citi; Christensen Farms; Croplan by Winfield United; East River Electric; Green Thumb Commodities; Hanson Associates LLC; LG Seeds; Leisinger Farms; Midwest Veterinary Service; Olsen Custom Farms; Riverview, LLP; RDO Equipment; Titan Machinery, and the US Army ROTC.**



## SD FFA Foundation Celebrates 50 Years of Philanthropy

50 years. An incredible journey focused on Building Leaders, Growing Communities and Strengthening Agriculture.

At the “kick-off party” 50 years ago, the SD Pork Producers and GTA Feeds, now part of CHS Foundation, each contributed \$1000. They are both still supporters, growing with us and committed for 50 years! In addition, Dr. Clark Hanson, SDSU Teacher educator was the 1st SD FFA Foundation board president. He is a long-time donor and serves with his time and talents as an advocate and board member. We celebrate their dedication and belief in the SD FFA!

In 2023, we reflect and celebrate our vision: Building Leaders, Growing Communities and Strengthening Agriculture. We celebrate 110 FFA chapters in SD. We celebrate a record 6,568 SD FFA members. We celebrate the strength of our organization by providing member

jackets and scholarships, chapter grants, and phenomenal leadership events and opportunities. With the support of individual and industry donors we celebrate the success of our current and past FFA members, as they lead our state and nation.

From the beginning, the SD FFA Foundation focused on supporting leadership development for FFA members & chapters, rewarding successes, and creating awareness of ag careers, agri-business opportunities & the needs of a growing & diverse industry.

Reaching our 50th anniversary, the SD FFA Foundation has been blessed to partner with our generous donors who have provided more than \$5.8 million in support to agriculture education and FFA programs in SD.

**FFA. Growing Leaders, Building Communities, and Strengthening Agriculture.**



The South Dakota FFA Foundation, Inc. is a non-profit organization that generates financial support for the 5,600 plus South Dakota FFA members in 110 high school programs. We build partnerships with individuals, business and industry, and organizations to secure resources for the future of agricultural education and FFA. We fund leadership development programs and activities for all South Dakota youth in agriculture education, as well as scholarships and awards for successful FFA members.

# Financials

## Balance Sheet as of June 30, 2022 (unaudited)

### CURRENT ASSETS

Checking.....	\$224,217.01
Savings.....	\$125,535.28

**Total Current Assets ..... \$349,752.29**

### INVESTMENT ASSETS

Reinke-Gray Wealth Management	
Bob Bell Endowment.....	\$137,216.93
Ernie Wingen Memorial Endowment.....	\$56,415.28
SD FFA Foundation Endowment.....	\$677,165.59
Gary Grey Endowment.....	\$14,079.25
Mary Hanson Endowment.....	\$90,188.18
Walt Johnson Endowment.....	\$43,395.37
Fred & Joan DeRouchey Endowment.....	\$48,980.07
SD Community Foundation.....	\$11,404.36
<b>Total Investment Assets.....</b>	<b>\$1,078,845.03</b>

**TOTAL ASSETS ..... \$1,428,597.32**

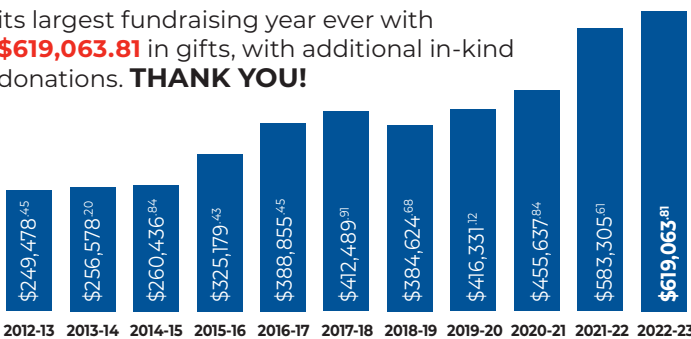
### LIABILITIES & EQUITY

Restricted Equity (Fund Balances).....	\$1,428,597.32
--	----------------

**TOTAL LIABILITIES & EQUITY ..... \$1,428,597.32**

## Total Giving

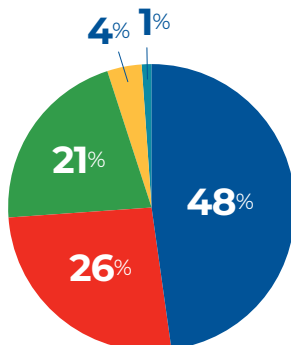
The South Dakota FFA Foundation recorded its largest fundraising year ever with **\$619,063.81** in gifts, with additional in-kind donations. **THANK YOU!**



# \$619,063.81

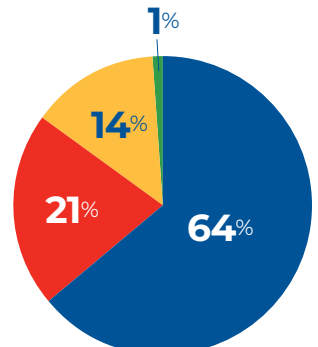
### 2022-23 Revenue

- Business, Corporation, & Association Gifts
- Individual Gifts
- Grants
- Affiliate Contributions
- Promotional Events



### 2022-23 Expenses

- Program Support
- Scholarships, Awards & Recognition
- Management and Operations
- Fundraising



## In-Kind Support

- Agropur - Milk Quality & Products training
- Adee Honey - FFA Auction
- Allevity Entertainment - FFA Auction
- Amanda Radke - FFA Auction
- Army ROTC - Retreat pens and water bottles
- Asgrow/Dekalb - FFA Auction
- Big E Auto - FFA Auction
- Big Iron Auction - FFA Auction
- Black Hills Embroidery - soft shell jackets for officers and ambassadors
- Brevant - FFA Auction
- Butler Machinery Company - FFA Auction
- C & B Operations - FFA Auction
- Common Sense Manufacturing - FFA Auction
- Cox's Farm Stand - FFA Auction
- Croplan by Winfield United - FFA Auction
- Dakota Layers - Poultry CDE supplies; feed, eggs, incubator, chicks for Ag Adventure Center
- Dakota Pure Bison - FFA Auction
- Dimock Dairy - FFA Auction
- Geffdog - backpacks for State Officers and Ambassadors
- Graham Tire - FFA Auction, booth space at DakotaFest
- Hetland's Hunting Haven Lodge - FFA Auction
- James Valley Landscape Solutions - FFA Auction
- Jorgenson's Meat Processing - FFA Auction
- Ken's SuperFair Foods and Shell Express - FFA Auction
- Kent and Faye Frerichs - American Degree pens
- KNLZ Designs - FFA Auction
- Lake Area Technical College - FFA Auction
- Lazy J Dairy, Wolsey - 2 calves for Ag Adventure Center
- Leisinger Farms - FFA Auction
- Lincoln Electric - 2 welders
- Littau Leather Company - padfolios for state officers
- Mark & Staci Schloe - painted clipboards for FFA Rabbit Best of Show and Reserve @ SD State Fair
- Midwest Dairy - Ag Adventure Center
- Midwest Stihl - chainsaw for Nursery Landscape CDE
- Millborn Seeds - FFA Auction, seeds for Agronomy CDE identification included in instructional packets
- Mustang Seeds - FFA Auction
- NewsCenter1/ConnectCenter1 - streaming and promoting convention
- Nicole's Needlework - FFA Auction
- NK Seeds - FFA Auction
- North American Wholesale Florists - flowers and supplies for Floriculture CDE
- NSU Athletics - FFA Auction
- Pipestone Systems - Ag Adventure Center
- R & R Pheasant Hunting - FFA Auction
- RDO Equipment Webster - FFA Auction
- Rebekah Scott Designs - FFA Auction
- Renk Seeds - FFA Auction
- Riverview LLP - Ag Adventure Center
- Rob-See-Co - FFA Auction
- Runnings Aberdeen - FFA Auction
- Salem Vet Service - Poultry CDE supplies
- Sanford Promise - bags for State Convention
- Sandy Osterday - FFA Auction
- SD Beef Industry Council - jerky & Ag Adventure Center
- SD Cattlemen's Association - meal coupons for State Fair FFA beef exhibitors
- SD Farm Bureau Women - Ag Adventure Center
- SD Pork Producers - meal coupons for State Fair, pig ears for Ag Adventure Center
- SDSU CAFES - FFA Auction, pens & folders for leadership retreat
- South Dakota Mines - FFA Auction, Senior Scholarship
- Southern Meadows Photography - FFA Auction
- Sutton Rodeo - Ag Adventure Zone
- The Rock Block - FFA Auction
- Triple T Brand - FFA Auction
- TSC - Aberdeen - FFA Auction
- USDA NRCS - Ag Adventure Center
- Vern Eide of Mitchell - FFA Auction
- Zoetis - FFA Auction

## Memorials

### In Memory Of

Ashley Weikamp .....SD FFA District 1, SDAAE  
 Bob Titus.....Sioux Falls Ford  
 Derek Zenk .....Gerri Eide  
 Eugene Nagel.....McCook Central FFA, Stella Nagel, Hunter Eide, Gerri Eide, Todd & Terry Marks, Stella Nagel, SDAAE  
 Jeff Hoffman.....Logan Hoffman  
 Justin Maass .....Lynn and Brenda Maass  
 Kendal Thompson .....Tim Alexander, Dale Bultena, Craig and Bonnie Dybedahl, Marshall, Myron & Drew Edelman, Randall Frederick, Robert Froke, Nathan Garner, Mark Goetz, Bruce Harden, Ron Jones, Derik Knock, Darin and Jessica Michalski, Jeff Nolte, Connie Sawinsky, Tim & Andrea Scotting, Cliff Spieker, Daniel Sprague, Gary Stenstrom, Scott Thompson, Kendall Thompson, James Thoreson, Patrick Timmerman, Frank Virchow, Jon Wehde, Ruth Westling  
 Larry Nelson .....Calvin Pietz  
 Palmer Eidet .....Myron Sonne  
 Wade Lang.....Laura Lentsch, Greg Salmen, Cory Schrag, Gretchen Sharp, Shawn Stoley

### Given By

## Honorariums

### In Honor Of

Cade Larson SCHS 2014 and Martee Larson SCHS 2016 .....David Larson  
 State officers Shad & Rebecca Christman.....Chuck and Kerry Christman

### Given By



## SD FFA Facts & Figures

### SD FFA – a membership poised for the future

- 5671 Members
- 2502 Females
- 3169 Male

### 110 FFA Chapters

- 51 include middle & high school students, 51 have only high school
- 84 Chapters are rural, 18 located in towns, and 1 located in a city
- 118 Agriculture Education teachers (65 are female, 53 are male)

### SD FFA member involvement:

369 members exhibited at the SD State Fair  
 496 State Leadership Development Event competitors  
 636 State Career Development teams  
 276 State FFA Degree recipients  
 206 members attended State Leadership Retreat  
 228 Proficiency Award applicants  
 154 Agriscience projects - 219 students involved

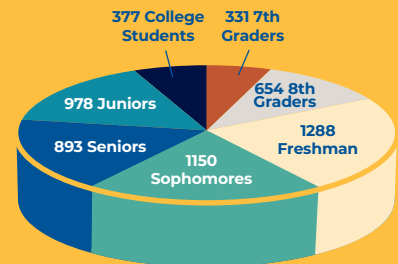
*FFA Day & Ag Adventure Zone over 300 members from 15 chapters advocated for agriculture*

*State FFA Convention was on TV and live streamed through News Center One, to thousands*

## Agriculture, Food and Natural Resources Pathways Students are Studying Student %

Ag Ed Students 10,108  
 Multiple Pathways 36.35%  
 Power, Structural and Technical Systems 18.11%  
 Animal Systems 16.34%  
 Environmental Service Systems 0.47%  
 Agribusiness Systems 3.83%  
 Natural Resource Systems 10.87%  
 Plant Systems 9.01%  
 Food Products and Processing Systems 1.58%  
 Cluster Skills 3.45%

## SD FFA MEMBERSHIP BY GRADE LEVEL



# 2022-23 SD State FFA Officer \$1/Year Club

**1954-55**  
David Bogue  
Curtis Brudos

**1956-57**  
Lloyal Saugstad

**1959-60**  
Terry Gere  
Marvin Wastell

**1960-61**  
George Twitero

**1961-62**  
Leonard Sigdestad

**1962-63**  
Larry Headrick

**1963-64**  
Myron Sonne

**1967-68**  
Rod Peterson

**1969-70**  
Lester Moeller

**1970-71**  
Gary L. Hansen  
Steven Leheska

**1971-72**  
Mark Christensen

**1972-73**  
Jon Wehde

**1973-74**  
Rocky Blare  
Terry Jaspers  
Roger Lee  
Scott Thompson

**1974-75**  
Dave Daniel  
Jerry Schmitz  
Chuck Sutton

**1975-76**  
Phil Tesch

**1976-77**  
Alan Vedvei

**1977-78**  
Craig Dybedahl  
Gene Stapleton  
Loren Wieting

**1978-79**  
Bruce Paterson

**1982-83**  
Paul Knecht  
Chris Nelson

**1985-86**  
Paula Hamilton  
Brad Ruden

**1988-89**  
Mike Jaspers  
Shawn Weishaar

**1989-90**  
Gerri Eide

**1990-91**  
Kindra Gordon

**1991-92**  
Laura Lentsch  
Greg Salmen  
Cory Schrag  
Gretchen Sharp  
Shawn Stoley

**1993-94**  
Joel DeRouchev  
Chad Wosje

**1994-95**  
Dawn Nagel  
Susan Stoterau

**1995-96**  
Craig Winquist

**1996-97**  
Ryan Cammack  
Sheri Kahnke

**1997-98**  
Ryan Eichler  
Barry & Jenny Jacobson  
Tracy Kaltvedt  
Mike Leheska  
Jon Minor

**1998-99**  
Shane Reis  
Nathan and Tiffany Sanderson

**1999-00**  
Bobbie Jo Donovan  
Roxanne Knock

**2000-01**  
Clay Edwards

**2001-02**  
Brad Bies

**2002-03**  
Jamie Brown  
Ryan Brunner  
Mary Christensen  
Kelly Keller  
Jared Knock  
Sarah Lambert

**2003-04**  
Arne Harstad

**2004-05**  
Becky Harstad

**2006-07**  
Dani Herring  
Ashley Konechne  
Matt Tollefson

**2007-08**  
Erin Andry  
Sara Bauder  
Matt Dybedahl  
Lauren Gilbertson  
Brett Monson  
Noelle Swanson

**2008-09**  
Maria Buus  
Shad Christman  
Wyatt DeJong  
Brian Gottlob  
Josh Johnson

**2009-10**  
Rebecca Christman

**2010-11**  
Spencer Chase

**2012-13**  
Kelli Clark  
Taylor Krause  
Andy Rausch  
Tyler Swan  
Savanna Washburn  
Ashley Wiesen

**2014-15**  
Nicole Roth

**2015-16**  
Jonathan & Jeannette Linke

**2016-17**  
Logan Hoffman

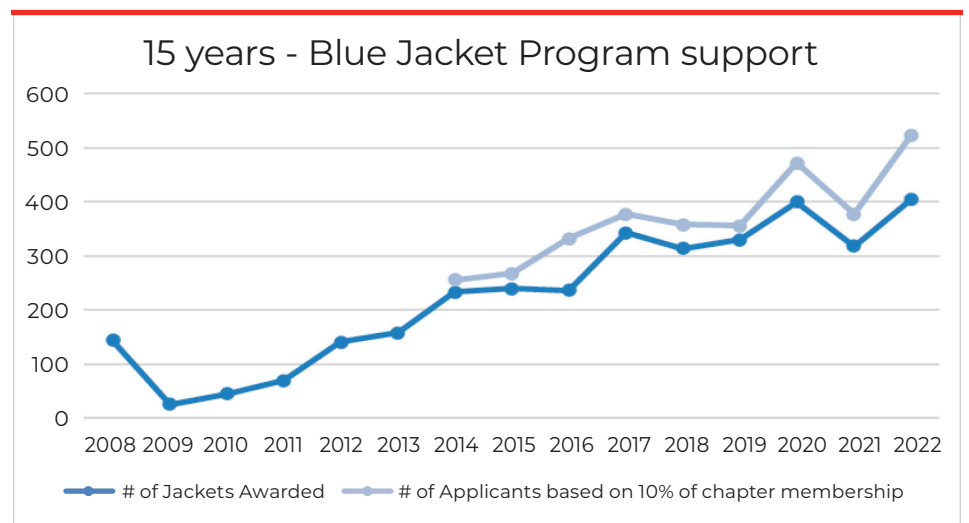
**2017-18**  
April Bowar  
Avery Gilchrist  
Dalton Larson  
Aaron Linke  
Elle Moon  
Clayton Sorum

**2018-19**  
Grady Gullickson

**2019-20**  
Sadie Vander Wal

**2020-21**  
Dirby Bawek  
Elizabeth DeBoer  
Hunter Eide  
Ryder Mortenson  
Samantha Olson

**2022-23**  
Caleb McGregor



# 2022-23 South Dakota FFA Foundation Board

## Officers

President.....	Sandy Osterday Manager, McFleeg, Inc., Bowdle
Vice President.....	Matilyn Kerr, SDSU
Secretary.....	Wyatt DeJong State FFA Association Executive Secretary
Treasurer.....	Jason Long The First National Bank of Sioux Falls. Sioux Falls
Sponsoring Committee Chair .....	Shad Christman Ballard Spahr LLP
Budget Committee Chair.....	Reed Johnson Agriculture Education Instructor, Philip
SD State FFA Advisor.....	Brianna Fabris
SD FFA Foundation Executive Director .....	Gerri Ann Eide
SD FFA Foundation Executive Assistant .....	Gretchen Sharp

## Members

Sandy Osterday  
Manager, McFleeg, Inc., Bowdle

Steven Zemlicka,  
Agtegra

Matilyn Kerr  
SDSU Brookings

Shad and Rebecca Christman  
Ballard Spahr LLP and Homemaker

Kevin Blagg  
First Dakota National Bank, Salem

## Members (continued)

CharLee Bachman  
Butte/Meade Water District

Matt Leisinger  
Farmer, Highmore

Jason Long  
The First National Bank of Sioux Falls. Sioux Falls

Tessa Erdmann  
2021-22 SD State FFA Officer

Samantha Olson  
2020-21 SD State FFA Officer

Adam Franken  
Agriculture Education Instructor, Groton

Dan Tonak  
Agriculture Education Instructor, Willow Lake

Jessica Knutson  
Agriculture Education Instructor, Centerville

Morgan Ackerman  
Agriculture Education Instructor, Parkston

Reed Johnson  
Agriculture Education Instructor, Philip

Mercedes Lemke  
Agriculture Education Instructor, Gettysburg

Alyssa Kientopf  
Agriculture Education Instructor, Garretson



## The Journey Is Not Over...

There are still young people to train as leaders, communities to grow, and our agricultural industry to strengthen. The legacy our donors are creating is alive and inspiring. It's exciting to look to the next 50 years and imagine all that our dedication and philanthropic spirit can accomplish through SD FFA members. **Join the more than 700 supporters already giving back, as we Build Leaders, Grow Communities and Strengthen Agriculture.**

- **Make a difference** in the lives of young people
- **Make an investment** today, guaranteed to grow tomorrow
- **Build employees**
- **Grow the legacy of FFA** – gift an endowment, bequest, beneficiary designation, or IRA's
- **Promote your organization**
- **Network with other leaders** in the agricultural and natural resources industry.
- **Affiliate with the largest agriculture-based youth organization in South Dakota.**
- **Pay it forward** - contribute online!
- **Feel good** about strengthening agriculture.

# Growing Leaders, Building Communities, and Strengthening Agriculture - Together

## 2022-23 CONTRIBUTORS TO THE SD FFA FOUNDATION

### Platinum (\$20,000 to \$49,999)

CHS Foundation  
Twin Cities Region Northland  
Ford Dealers

### Sapphire (\$10,000 to \$19,999)

Dana Dykhouse  
Farm Credit Services of  
America  
Farmers Mutual of Nebraska  
First Dakota National Bank of  
Yankton  
Nationwide  
Pioneer/Corteva  
SD Corn Utilization Council  
SD Farm Bureau Charitable  
Fund of the SD Community  
Foundation  
Summit Carbon Solutions

### Gold (\$5,000 to \$9,999)

ADM Grain Harrold, Miller,  
Tulare  
Ag Processing Inc.  
Agtegra Cooperative  
BankWest  
Butler Machinery Company  
C & B Equipment  
CROPLAN by WinField United  
Dacotah Bank  
Dakotaland Feeds, LLC  
GDM Solutions, Inc.  
Land O' Lakes Foundation  
The First National Bank in Sioux  
Falls  
Titan International  
Visit Brookings

### Ruby (\$2,500 to \$4,999)

BASF  
Chad & Rhonda Wosje  
Christensen Farms & Feedlots  
Citibank (South Dakota) N.A.  
Fund & Citibank-McKnight  
of the SD Community  
Foundation  
Dakota Grain Connection  
East River Electric Cooperative  
Green Thumb Commodities,  
Inc.  
Hanson & Associates LLC  
Janice & the late Kendal  
Thompson  
Leisinger Farms

LG Seeds  
Lon and Mary Moeller  
Marvin and Corinne Westell  
Midwest Veterinary Service  
OMD/U.S. Army  
RDO Equipment Company  
Rick and Sandy Osterday  
Riverview LLP  
Scheels  
SD Agricultural Foundation  
SD Dept. of Agriculture and  
Natural Resources  
SD Farmers Union  
Titan Machinery  
US Army ROTC  
Wessington Springs FFA  
Zoetis

### Pearl (\$1,000 to \$2,499)

605 Sires+Donors  
AgroLiquid  
Agropur  
Alpha Gamma Rho and Sigma  
Alpha  
Associated Milk Producers, Inc.  
Basin Electric Power  
Cooperative  
Beresford FFA  
Black Hills Federal Credit Union  
Brian Gottlob  
Central Farmers Cooperative  
and FREMAR, LLC  
Chris and Penny Nelson  
Chuck and Kerry Christman  
Clark and Lyla Hanson  
Craig and Bonnie Dybedahl  
CTE Global, Inc.  
Dell Rapids FFA  
Doug and Clara Marsh  
Farmers Implement &  
Irrigation/Kubota  
FarmHouse Fraternity - SDSU  
First Bank & Trust  
Frank Kurtenbach  
Gary L. Hansen  
George Twitero, DVM  
Glen Davis  
Hefty Seed Company  
Hoegemeyer Hybrids  
Hurley & Associates  
Jim Chilson  
Jon and Emily Minor  
Jonathan & Jeanette Linke  
Kevin & Amber Blagg  
Kyle & Jody Peterson

Legend Seeds, Inc.  
Leon and Mary Lunders  
Logan Hoffman  
Lyle Anderson  
Michael Leheska  
Plains Towing and Recovery  
LLC  
Salem Veterinary Service  
Scotland Ag Supporters  
SD Division of the Midwest  
Dairy Association  
SD Nursery & Landscape  
Association  
SD Pork Producers Council  
SD Retailers Association  
SD Soil Health Coalition  
SD Soybean Research &  
Promotion Council  
SD Wheat Commission  
SDSU College of Agriculture,  
Food and Environmental  
Sciences  
Sioux Valley Energy  
SoDak Labs, Inc.  
Stella Nagel  
Watertown Fraternal Order of  
Police Lodge #6  
Wendy Mortenson  
Wendy Mortenson Agency  
YieldPro Ag

### Silver (\$500 to \$999)

Alice Hart  
Anonymous  
Ashley & Jordan Wiesen  
Belle Fourche FFA  
BioZyme  
Black Hills Special Services  
Cooperative (BHSSC)  
Bowdle FFA  
The Franken Family  
Cammack Ranch Supply, Inc.  
Canton FFA  
Centerville FFA  
Central States Fair/ Black Hills  
Stock Show  
Chester Area FFA  
Dakota Hills Veterinary Clinic  
Dakota Layers, L.L.P.  
Dakota Mill & Grain Inc.  
Dan and Nicole Tonak  
Darrick Van Dyke  
Darrin Erdmann  
Donna Acheson  
Dr. James & Judith Johnson

Ducks Unlimited  
Eichacker Simmentals  
Eileen Peterson  
Fall River Feedyard, LLC  
Farm Progress & Dakota  
Farmer  
Gary Bachman  
Gettysburg FFA  
Glacial Lakes Energy, LLC  
Grain Millers, Inc.  
Gregory County FFA  
Grossenburg Implement, Inc.  
H&H AgSolutions LLC  
Hart Angus  
Howard FFA  
Jennifer Jacobson  
K Bar J Leather, Co  
Kelvin & Carol Grey  
Kibble Equipment  
Kimball Livestock Exchange  
Leonard Sigdestad, D.V.M.  
Livestock Specialists, Inc.  
Richard Lauck Family  
McCook Central FFA  
Meyerink Farm Service  
Mike Jaspers  
Millborn Seeds  
MinnTex Citrus  
Nathan and Tiffany Sanderson  
New Generation Supplements  
Next Level Ag, LLC  
Nicholas Grey  
Outlaw Truck and Tractor  
Pulling Assn  
Paul Knecht  
Philip FFA  
Plains Commerce Bank  
Potter County Farm Bureau  
Prairie Winds Humbolt LLC  
Premier Equipment  
ProAg Engineering, Inc.  
Ranchers Feed & Seed  
Randy and Julie Jones  
Ravellette Publications, Inc.  
Reinke-Gray Wealth  
Management  
Ronald A. Johnson  
Rufus & Patty DeZeeuw  
Ryan & Kristi Cammack  
SD Biotech Association  
SD Cattlemen's Foundation  
SD Crop Improvement  
Association  
SD Farm Bureau Young  
Farmers & Ranchers





# Growing Leaders, Building Communities, and Strengthening Agriculture - Together

## 2022-23 CONTRIBUTORS TO THE SD FFA FOUNDATION



SD Florists Association  
SD Grasslands Coalition  
SD Poultry Industries Association  
SD Seed Trade Association  
SD Soybean Processors, LLC  
SD Veterinary Medical Association  
SDARL  
SD-NRCS  
Seed Exchange LLC  
Shawn Weishaar  
Sioux Falls Ford  
Site Work Specialists  
Skinner Financial Services  
Smithfield Foods  
Terry Jaspers  
The Dan Streff Family  
Tractor Supply Company  
Tri Valley FFA Alumni  
Valley Queen Cheese  
Van Kooten Ag Service  
Viborg - Hurley FFA  
Wall Meat Processing  
West River Electric Association  
White Veterinary Service  
Wilbur-Ellis

### Bronze (\$250 to \$499)

Alan and Marlys Fenner  
Amani Reiners  
Avera Health  
BASF  
Beef Bucks, Inc  
Blane & Liz Osterday  
Bruce and Kim Paterson  
Cargill  
Carl and Kari Sanders  
Central Bank  
Charlie Hoffman  
CHS, Inc.  
Clay & Angie Edwards  
Cob Creek Cattle  
Colman - Egan FFA  
Concordia University  
Craig & Maure Weinkauff  
Craig and Kari Winquist  
Custom Genetic Solutions  
Dacotah Diamond Auctions  
Dakota Farm Talk  
David Graper  
De Johnson  
DeJong Ranch  
Doland FFA  
Doland FFA Alumni  
Duralite Mfg  
Dwight & Patty Zemlicka  
Eric and Roxanne Knock

Eugene & Julie Streff  
Fellowship of Christian Farmers Intl.  
First State Bank of Roscoe  
Fred and Joan DeRouchev  
George Allen  
Gerri Eide  
Greg Salmen  
Gregory County Lions Club  
Gretchen Sharp  
Gullickson Family Livestock  
Harrisburg FFA  
Henry & Paula Linke  
High Plains Journal  
Hitchcock - Tulare FFA  
Horizon View Farms  
Irma LeFaive  
Jerry Nolz  
Jim Orris  
Jim Wilson  
John Olbertson  
Jon Verhelst  
Josh Johnson  
Kari Rogers  
Kelli Clark  
Kelly Weaver  
Kennedy Implement  
Kuecker Seed Farm, Inc.  
Lance Howe Family  
Laura Hasselquist & Toby Uecker  
Lazy J Bar Ranch  
Lemmon FFA  
Leon and Genevieve Minor  
LeRoy and Cathie Draine  
Loren Helmer  
Loren Wieting  
Mark and Susan Geib  
Mark Christensen  
Mark Gross  
Ketelhut Family  
Masaba, Inc.  
McFleeg Feeds  
M&M Cattle Services LLC  
Midwest STIHL  
Mike and Ann Tornberg  
Milbank FFA  
Miller FFA  
Mitchell FFA  
Mitchell Technical College  
Monte and Ruth Mason  
Myron Sonne  
NAU Country - A QBE Insurance Company  
Newell Ram Sale  
Nicole Roth  
Northern State University  
Northwestern College

On Target Agency  
Paula & Scott Hamilton  
Pennington Conservation District  
Rapid City Stevens FFA  
Raven Industries  
RDO Equipment Company  
Rob Shuey  
Rod & Wendy Peterson  
Roy and Sara Gjerde  
Ryan Eichler  
Sandra and the late Larry Nelson  
Sanford Health  
Sanford Research  
Sarah and Keith Lambert  
SD Assn. of Conservation Districts  
SD Bankers Association  
SD Beef Industry Council  
SD Broadcasters Association  
SD Cattlemen's Association  
SD School of Mines and Technology  
SD Walleye Charters  
Shad Christman  
Sheridan College  
Sleepy Hollow Farm  
South Dakota Air National Guard  
Southwest Minnesota State University  
Stangl Shorthorns  
Susan Stoterau  
Tabor Lumber Coop  
Terry Rieckman  
The Cattle Business Weekly - Donnie & Krecia Leddy  
The Meathouse  
Theresa Wingen  
Titan Machinery  
Titan Machinery - Watertown  
Tracy and Brett Kaltvedt  
Tri-State Neighbor  
Univ. of NE, Nebraska College of Technical Agriculture  
USDA Farm Service Agency  
Victory Farms of Milbank and Revillo, SD  
Wagner Herefords  
Western Dakota Technical Inst.  
Whetstone Commodities, Inc. - Arne & Becky Harstad  
Wilbur-Ellis  
Wilbur-Ellis  
Willow Lake FFA  
Wilmot FFA  
Yankton FFA

### Copper (\$100 to \$249)

Aaron Johnson  
AGCO - Butte Implement Company  
Ali Blair  
Amanda Roth  
Andrea & Jim Bauer  
Andy Rausch  
Ash Grove Dairy  
Ashley and Tony Konechne  
Aurora Cooperative  
Avery Gilchrist  
Bar JZ Ranches  
Bison FFA  
Blair Brothers LLC  
Blake and Glenda Eisenbeisz  
Bobbie Jo Donovan  
Boldt Farms  
Bon Homme FFA  
Bones Elevator Co.  
Brad and Kathy Sanderson  
Brad Ruden  
Brett Monson  
Brian & Codi Mills  
Brookings FFA  
Brown Commodities  
Buffalo Ranch Supply  
Burke Oil Co.  
Calvin Pietz  
Candidus and Londa Nwadike  
Central Dakota Guide Service  
Chamberlain FFA  
Chandra Chase  
Chas Fleshner  
Cliff Spieker  
Clint and Kiersten Sombke  
Cory Schrag  
Craig Arbach  
Craig Ostebee  
Crazy Lady Consulting  
Curtis Brudos  
Dakota Radio Group: KGFX, KOLY, KPLO, KMLO  
Dan and Dixie Oedekoven  
Dan and Sheri Kahnke  
Dane and Donna Lambert  
Dani Herring  
Daniel Sprague  
Darrin & Michelle Olson family  
David and Mary Rae Skoglund  
David Bogue  
David Frazier  
David Larson  
De Smet FFA  
Dell Rapids Coop Grain  
Delwin Schmidt  
De-Tye Vet Supply Inc.

# Growing Leaders, Building Communities, and Strengthening Agriculture - Together

## 2022-23 CONTRIBUTORS TO THE SD FFA FOUNDATION

Double M Crop Service  
 Dry Creek Farm & Ranch  
 Duane and Ann Wulf  
 Erin Andry  
 Ethan FFA  
 Fall River Veterinary Clinic  
 Fiedler Farms, Inc.  
 First PREMIER Bank  
 Frank Virchow  
 Gail Sperlich  
 Garretson FFA  
 Gene Stapleton  
 Greg Endres  
 Gro Master, Inc.  
 Groton FFA  
 Hansmeier & Son, Inc.  
 Harding County FFA  
 Hot Springs FFA  
 Howe Seeds, Inc  
 Hunter Eide  
 Huron FFA  
 Jack's Campers  
 Jamie Brown  
 Jared and Kati Lynn Knock  
 Jason Long  
 Jean and Lyle Kessler  
 Jeff Nolte  
 Jeff Vander Wilt  
 Jerry Janish  
 Jerry Schmitz  
 Jim and Ethel Kurtz  
 Jim Woster  
 Jody Weiss  
 Joel and Julene DeRouchey  
 John Lentz  
 Jones County FFA  
 Jorgenson's Meat Processing  
 Keith & Kristi Hainy  
 Kelly Keller  
 Kevin and Jeanine Schnieders  
 Kevin and Sandy Ortberg  
 Kindra Gordon  
 Knutson Suffolks  
 Koupal Lazy EY Angus Ranch  
 Larry Headrick  
 Laura Lentsch  
 Lauren Gilbertson  
 Lennox FFA  
 Loyal Saugstad  
 Loehr Horse Care LLC  
 Hansen Family Endowment  
 of the Sioux Falls Area  
 Community Foundation  
 The Family of Justin Maass  
 Mary and Cody Christensen  
 Mary Nagel  
 Matilyn Kerr  
 Matt Dybedahl  
 Mike and Michelle Eichacker  
 Montrose FFA  
 Northern Hills Veterinary Clinic  
 Northern Plains Landscaping  
 Odden Cattle Company  
 Parker FFA  
 Parkston FFA  
 Paul Fixen  
 Paulsen Marketing  
 Robert Peterson and Vicki  
 Vining, Peterson Livestock  
 Philip Scotties Booster Club  
 Phillip Werman  
 Platte - Geddes FFA

Randy and Linnette Albers  
 Randy Richards  
 Rapid City Central FFA  
 Ray Krause  
 Rechelle and Eric Dissing  
 Red River Farm Network & Ag  
 Information  
 Richard and Joyce Vasgaard  
 Richard Fuller  
 Robert and Carmen Thomas  
 Rocky Blare  
 Rodney Yost Horsemanship  
 Roger DeRouchey  
 Roger Lee  
 Ron Hillestad  
 Rutland FFA  
 Ryan and Whitney Brunner  
 Sadie Vander Wal  
 Sara & Sean Bauder  
 Savanna Washburn  
 Schnabel Ranch LLC  
 Scotland FFA  
 Scott Supply Co.  
 Scott Thompson  
 SD Association of Cooperatives  
 SD FFA District 1  
 SD Shorthorn Association  
 SD Society for Range  
 Management  
 SDAAE  
 SDSU College of Education &  
 Human Sciences  
 SDSU Little International  
 Shane & Tessa Reis  
 Sharon Smeenk  
 Shawn Stoley  
 Sioux Valley FFA  
 Tim Begalka, Sodak Gardens  
 Spencer Chase  
 Steven and Laurie Zemlicka  
 Steven Leheska  
 Stewart Charolais  
 Stotz Seed LLC  
 Susan Vander Wal  
 Suzy Geppert  
 Taylor Krause  
 Terry Gere  
 Thomas Ranch  
 Thompson Family  
 Tim & Andrea Scotting  
 Tim & Val Wengler  
 Todd and Barbara Powell  
 Tom and Karen Swan  
 Drs. Travis and Meagan  
 Hoffman  
 Tyler Swan  
 Vance Masteller  
 Vander Wal Livestock  
 Vedvei Charolais  
 Watertown Area (NETHS) FFA  
 Wayne Fischer  
 Wayne Fuller  
 Webster FFA  
 Wes Hotchkiss  
 West Central FFA Alumni  
 Western Ag Reporter  
 Woehl Rabbits  
 Wyatt & Zana DeJong

**Corduroy (\$50 to \$99)**  
 Aaron Linke  
 Allen and Delila Mehlhaf  
 Andy & Lisa Moon  
 April Bowar  
 Arlington FFA  
 Baltic FFA  
 Bill Chase  
 Brad and Trixie Grill  
 Brian and Colleen Simon  
 Caleb McGregor  
 CharLee Bachman  
 Chuck and Val Sutton  
 Clair Welbon  
 Clayton Sorum  
 Conrad Otterness  
 Curt and Carla Winquist  
 Dakota Border Boys  
 Dalton Larson  
 Dan Minor  
 Daniel & Nancy Scholl  
 Darwin and Cindy Aman  
 Dave Daniel  
 David Fendrich  
 Dawn Nagel  
 Dawnwind Dairy Goats  
 Derik Knock  
 Ed & Julie Mueller  
 Edgemont FFA  
 Elkton FFA  
 Elle Moon  
 Gary and Bev Monson  
 Gary Stenstrom  
 Grady Gullickson  
 James Thoreson  
 Jeral and Andrea Gross  
 Jim and Karen Kopriva  
 Jim Clendenin  
 John and Chris Wheeting  
 Jon Wehde  
 Justin & Jackie Kessler  
 Karl Bright  
 Kay and Rick Miller  
 Ken's Super Fair Foods  
 Lake Preston FFA  
 Lori Moen  
 Madison Central FFA  
 Malachi Strategies  
 Maria & Colton Buus  
 Mark Goetz  
 Mark & Heather Fillaus  
 Marshall, Myron & Drew  
 Edelman  
 Matt and Kelsey Tollefson  
 Michalski Cattle LLC  
 Morgan Ackerman  
 Myron and Mary Williams  
 Nathan Garner

Patrick Timmerman  
 Phil Tesch  
 Reid Christopherson  
 Ron Jones  
 Rosemary Rounds  
 Selby Area FFA  
 Sharp's Inc.  
 Southeastern Electric Coop,  
 Inc.  
 Steve Deuschle  
 Thrivent Grant  
 Tim Alexander  
 Todd & Terry Marks  
 Wally and Kathy Knock  
 Warren Skinner  
 Watertown Animal Clinic  
 Wayne, Vicki, Ryan and Jason  
 Soren

**Friend (\$1 - \$49)**  
 Adam Franken  
 Barry and Jenny Jacobson  
 Bob and Sandy Rennolet  
 Brad Bies  
 Bruce Harden  
 Connie Sawinsky  
 Cozine Electric  
 Craig Sjovall  
 Dale Bultena  
 Dave and Rochelle Stout  
 Dirby Bawek  
 Douglas Feten  
 Elizabeth DeBoer  
 Emily Lohr  
 Ethan Hendrix  
 Gail Weishaar  
 Gary and Aileen Brunner  
 Grace Zubke  
 Highmore FFA  
 Hoven FFA  
 Iroquois FFA  
 Jared Gross  
 Jim Petik & Sons, Inc.  
 Kathy Myers  
 Kristi Goehring  
 Lester Moeller  
 Marvin and Janet Kizer  
 Randall Frederick  
 Rick and Judy Wagner  
 Robert Froke  
 Ronald Walker  
 Ruth Westling  
 Ryder Mortenson  
 Samantha Olson  
 Steve Moeller  
 Sully Buttes FFA  
 The Jacobson Group, LLC  
 Tom Fergen



# Contribution Form

## South Dakota FFA Foundation, Inc. Contribution Form

**Yes! I want to help shape the next generation of leaders in FFA**  
Growing Leaders - Building Communities - Strengthening Agriculture



To give online, scan this code or go to: [sdffaoundation.org](http://sdffaoundation.org)

(Please clip or copy this form to show your continued support for South Dakota FFA members, both present and future.)

**Mail to:** SD FFA Foundation, Inc.

39393 133rd St., Bath, SD 57427

Company Name \_\_\_\_\_

Contact Name \_\_\_\_\_

Address \_\_\_\_\_

City \_\_\_\_\_ State \_\_\_\_\_ Zip \_\_\_\_\_

Phone \_\_\_\_\_

Email \_\_\_\_\_

**I would like to contribute:**

\$50       \$100       \$250       \$500

\$1000       Other \$ \_\_\_\_\_

Sponsor an FFA Jacket — \$90

Program/Award Sponsor (Please contact us for info)

**I would like this gift to be:**

In Honor Of \_\_\_\_\_

In Memory Of \_\_\_\_\_





**SOUTH DAKOTA FFA FOUNDATION, Inc.**  
39393 133<sup>rd</sup> St.  
Bath, SD 57427

NONPROFIT  
US POSTAGE  
PAID  
ABERDEEN, SD  
PERMIT NO. 200

## Why should YOU invest?



"FFA was one of the 1st organizations I had a significant leadership role in. It started at the local chapter, evolved to serving as a State FFA Officer, and then during college getting involved in Collegiate FFA, FarmHouse, and student government. Now I serve my community as mayor. FFA was my start. The parliamentary procedure that I use today is still the fundamentals I learned in my local FFA chapter and used to participate at the district level. I believe in giving back to organizations that have given me life skills." **Terry Jaspers, Webster Alumni, '73. State Secretary 73-74**



"The FFA Foundation is a cherished resource in our agricultural communities, offering today's learners the support and steps to become tomorrow's farmers, ranchers and business leaders. FFA provides young people with education and experiences, empowering them to lead, advocate for themselves and the community around them, and ultimately grow into dedicated and engaged contributors to the world. RDO Equipment Co. is a proud Star Partner and supporter of the FFA Foundation and the young adults who will lead agriculture's next generation." **Brook Stephens, Vice President Midwest Ag, RDO Equipment Co.**



"The South Dakota Corn Utilization Council (SDCUC) is a long-time 4-Star Partner of South Dakota FFA. The SDCUC believes in educating today's youth, providing opportunities for tomorrow's agricultural leaders, and building a legacy for South Dakota farm families. South Dakota Corn invests in FFA students because these young people represent the future of agriculture in our state. These students will be our next farmers, engineers, agronomists, board members, journalists, bankers, veterinarians, food scientists, legislators, and the list goes on and on. The leadership skills they gain from FFA through hands-on classroom activities, career development events, and networking with their peers, is an investment that pays back tenfold. We often have the pleasure of meeting current FFA students. Take our word for it - the future of agriculture in South Dakota is in great hands." **Amanda Bechen (Mitchell FFA Alumni), Director of Marketing, South Dakota Corn**